



175 NW Washington Street
Lake City, Florida 32055, USA
Web: www.diverite.com
Phone: 386.752.1087
Fax: 386.755.0613

BC1090-S/S SS Single Tank Adapter

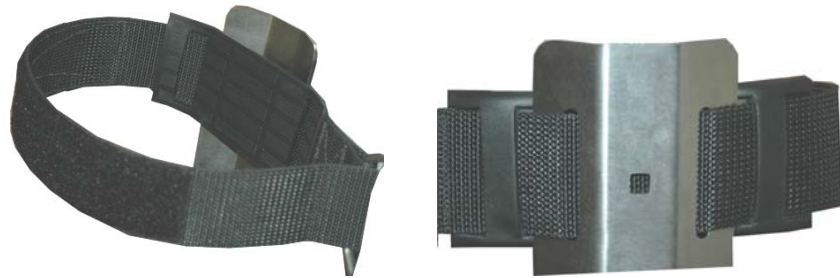
Product description

The SS Single Tank Adapter consists of a stainless steel plate, two rubber pads, and attachment bolts. The Single Tank Adapter can be used with any back plate and wing designed to be used with a single tank (e.g. Dive Rite's Venture Wing). The Single Tank Adapter provides an attachment point for two cam bands (not supplied), which secures the tank in place. The rubber pads provide padding between the metal plate and your tank and must be installed on the cam bands. The bolts are used to connect together the Single Tank Adapter, back plate, and wing, making a complete BC system.



To setup the SS Single Tank Adapter

1. Undo the webbing on both cam bands (not supplied) so that the webbing lies flat.
2. Slide one end of the rubber pads (provided) onto each cam band so that the other end remains loose. Make sure the rubber pads face towards the inside of the webbing (the side that comes in contact with the tank). Slide the rubber pads up to the sewn flap that holds the cam buckle in place.
3. Weave each cam band through the slots on the Single Tank Adapter so that the webbing is on the inside of the curved side of the Single Tank Adapter and covers the bolt heads.
4. Place the rubber pad over the Single Tank Adapter.
5. Weave the other end of the cam band through the belt loop on the rubber pad. See the diagrams below. **Note:** The bolt is not shown in the diagram on the right, but should be coming through the square hole.



175 NW Washington Street
Lake City, Florida 32055, USA
Web: www.diverite.com
Phone: 386.752.1087
Fax: 386.755.0613

BC1090-S/S SS Single Tank Adapter

Product description

The SS Single Tank Adapter consists of a stainless steel plate, two rubber pads, and attachment bolts. The Single Tank Adapter can be used with any back plate and wing designed to be used with a single tank (e.g. Dive Rite's Venture Wing). The Single Tank Adapter provides an attachment point for two cam bands (not supplied), which secures the tank in place. The rubber pads provide padding between the metal plate and your tank and must be installed on the cam bands. The bolts are used to connect together the Single Tank Adapter, back plate, and wing, making a complete BC system.

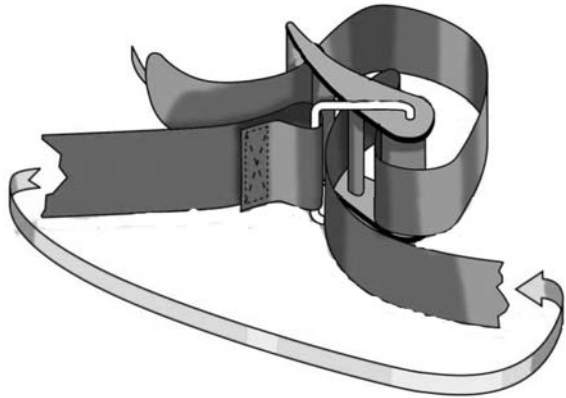


To setup the SS Single Tank Adapter

1. Undo the webbing on both cam bands (not supplied) so that the webbing lies flat.
2. Slide one end of the rubber pads (provided) onto each cam band so that the other end remains loose. Make sure the rubber pads face towards the inside of the webbing (the side that comes in contact with the tank). Slide the rubber pads up to the sewn flap that holds the cam buckle in place.
3. Weave each cam band through the slots on the Single Tank Adapter so that the webbing is on the inside of the curved side of the Single Tank Adapter and covers the bolt heads.
4. Place the rubber pad over the Single Tank Adapter.
5. Weave the other end of the cam band through the belt loop on the rubber pad. See the diagrams below. **Note:** The bolt is not shown in the diagram on the right, but should be coming through the square hole.

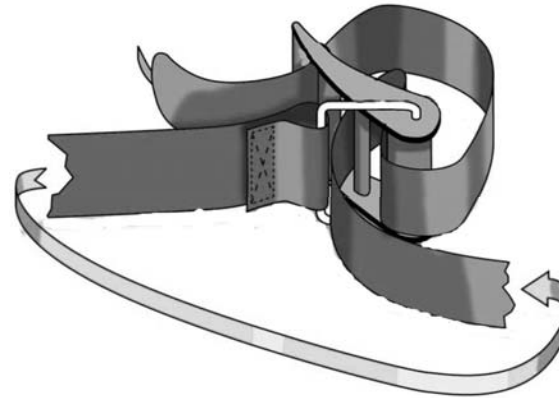


-
6. Weave the cam bands' webbing through the cam band buckle. See the diagram below.



7. Slide your air cell (wing) over the bolts connected to the Single Tank Adapter. Position the wing so that the wing's grommet holes line up with the bolts.
8. Slide your back plate onto the bolts, so that the back plate rests against the wing.
9. Slide the washers provided onto the bolts.
10. Thread the wing nuts provided onto the bolts. Tighten firmly.
11. Attach the completed rig to your single tank by sliding the cam bands over the tank and then securing the cam bands.

-
6. Weave the cam bands' webbing through the cam band buckle. See the diagram below.



7. Slide your air cell (wing) over the bolts connected to the Single Tank Adapter. Position the wing so that the wing's grommet holes line up with the bolts.
8. Slide your back plate onto the bolts, so that the back plate rests against the wing.
9. Slide the washers provided onto the bolts.
10. Thread the wing nuts provided onto the bolts. Tighten firmly.
11. Attach the completed rig to your single tank by sliding the cam bands over the tank and then securing the cam bands.